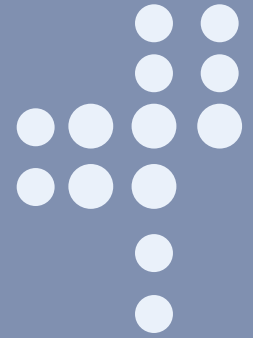


GUARDIANT

- Purpose for Men Skin Care



Applicable products of GUARDIANT

- For men's skin care
- Skin care product for enhancing skin barrier

What is GUARDIANT?

GUARDIANT was made for the purpose of the men skin care with excellent effect to protect skin. GUARDIANT strengthens skin barrier, increases skin recovery in epidermal by promoting Involucrin, TGase-1, Cornified envelope and provides deep moisturizing effect.

About "Samphire"

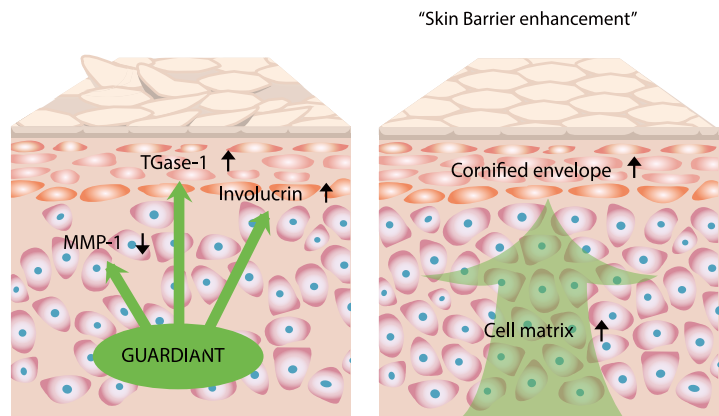


Common name	Samphire, Glasswort
Main component	Betaine, Mineral, Amino acid

- Samphire is known as glasswort, sea asparagus and sea pickle and generally grows along the coast.
- Samphire has good effect for acne, freckles and other skin trouble and has detox effect.
- Minerals and amino acids are help skin recovery and provide moisture to skin.

Purposed mechanism for GUARDIANT

- GUARDIANT increases Involucrin production which is a component of the keratinocyte cross-linked envelope in skin layer.
- GUARDIANT enhances the production of cornified envelope (CE), which is an insoluble structure surrounding the corneocytes and maintain the barrier function in the skin by increasing Involucrin combination.
- GUARDIANT protects skin from dryness or roughness by accelerating skin barrier mechanism and keeping moisture for vital and glossy skin.



SPECIFICATION

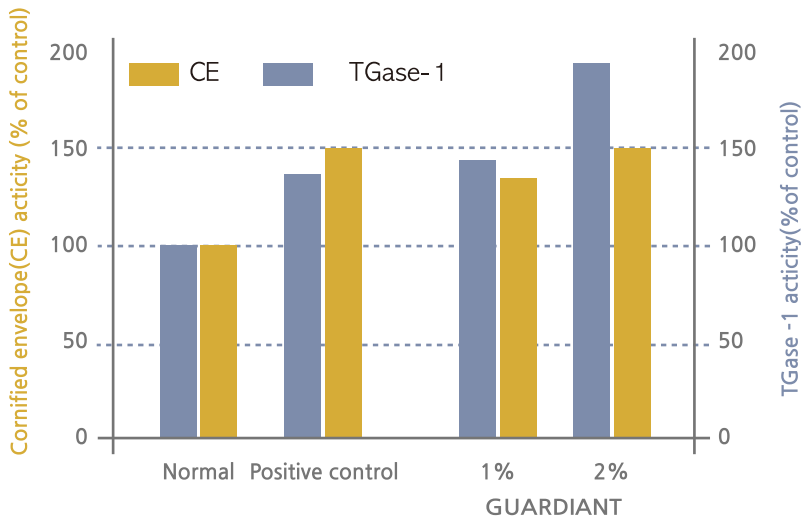
INCI Name
Appearance
Identification test
Preservative
Packing unit
Shelf life
Dosage

Salicornia Herbacea Extract
Light yellow Liquid
Dark green
Non-added
5kg/ 10kg/ 20kg
2 years
1~5%

Main Biological Effects for Cosmetics

● Enhancement effect of skin barrier

[Improvement of Transglutaminase (TGase-1) and Cornified Envelope(CE)]



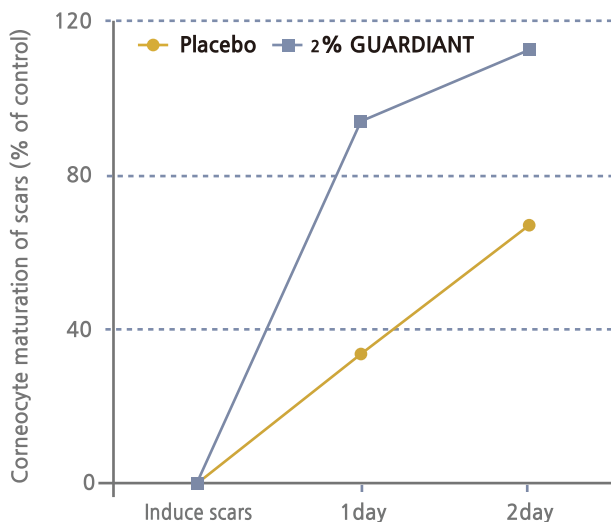
[Improvement of Cornified Envelope(CE)]

- GUARDIANT enhances the activity of cornified envelope (CE) compared with control. By promoting maturation of the cornified envelope, strengthen skin barrier and protect skin from external environment.

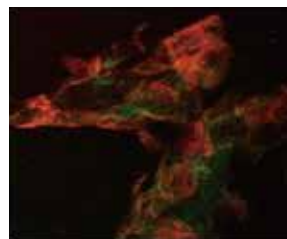
[Improvement of TGase-1]

- TGase is a enzyme catalyzing an intermolecular bond between proteins. GUARDIANT has enhancement effect of skin barrier by increasing TGase-1 activity.

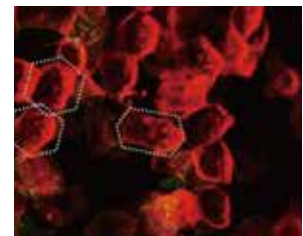
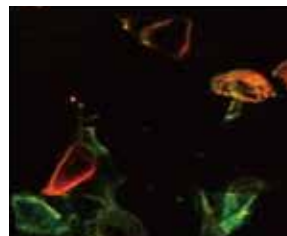
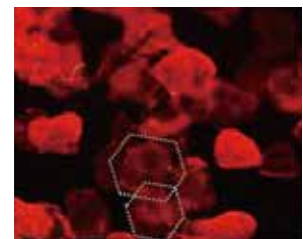
[Skin barrier enhancement effect by Corneocyte maturation]



After shaving(scars)



2% GUARDIANT



- After shaving, stratum corneum in skin was damaged so couldn't have hexagon shape and leads skin trouble. When treated with 2% of GUARDIANT, it improves cell recovery with hexagon shaped skin cell. GUARDIANT promotes corneocyte maturation and helps normalize damaged startum corneum effectively.